



# PASSARELLA & ASSOCIATES INC

November 10, 2016

Mr. Don Lucas  
Future Realty Services, Inc.  
8260 College Parkway, Suite 103  
Fort Myers, Florida 33919

RE: FLUCFCS and Listed Species Location Map  
Chiquita 27 Acre Parcel  
Project No. 16FRS2549

Dear Don:


Per your request, Passarella & Associates, Inc. (PAI) did review the Chiquita 27 Acre Parcel (Parcel) located in North Cape Coral on November 8, 2016. More specifically, a cursory mapping and survey were conducted on-site for state and/or federal jurisdictional wetlands and listed species, respectively. The resulting map (attached) shows no potential wetlands on the subject property. The Parcel's cover types were mapped using the Florida Land Use, Cover and Forms Classification System (FLUCFCS).<sup>1</sup>

The results of the cursory survey conducted by PAI while on-site found seven burrowing owl (*Athene cunicularia*) burrows (one active and six inactive) (see attached map). The burrowing owl is a state listed species of special concern and is protected at the federal level under the Federal Migratory Bird Protection Act. The burrowing owl nesting season runs from February 15 to July 10 each year so some of the currently identified inactive burrows may become active during the upcoming nesting season. The only way to verify this will be to check them again in the spring. Nonetheless, obtaining a burrowing owl burrow take permit is not too difficult to obtain from the Florida Fish and Wildlife Conservation Commission. The burrowing owl burrows can only be taken during the non-nesting season when there are no eggs or young in the nest.

Following your review of this information and the attached map, if you have any questions, please do not hesitate to call.

Sincerely,

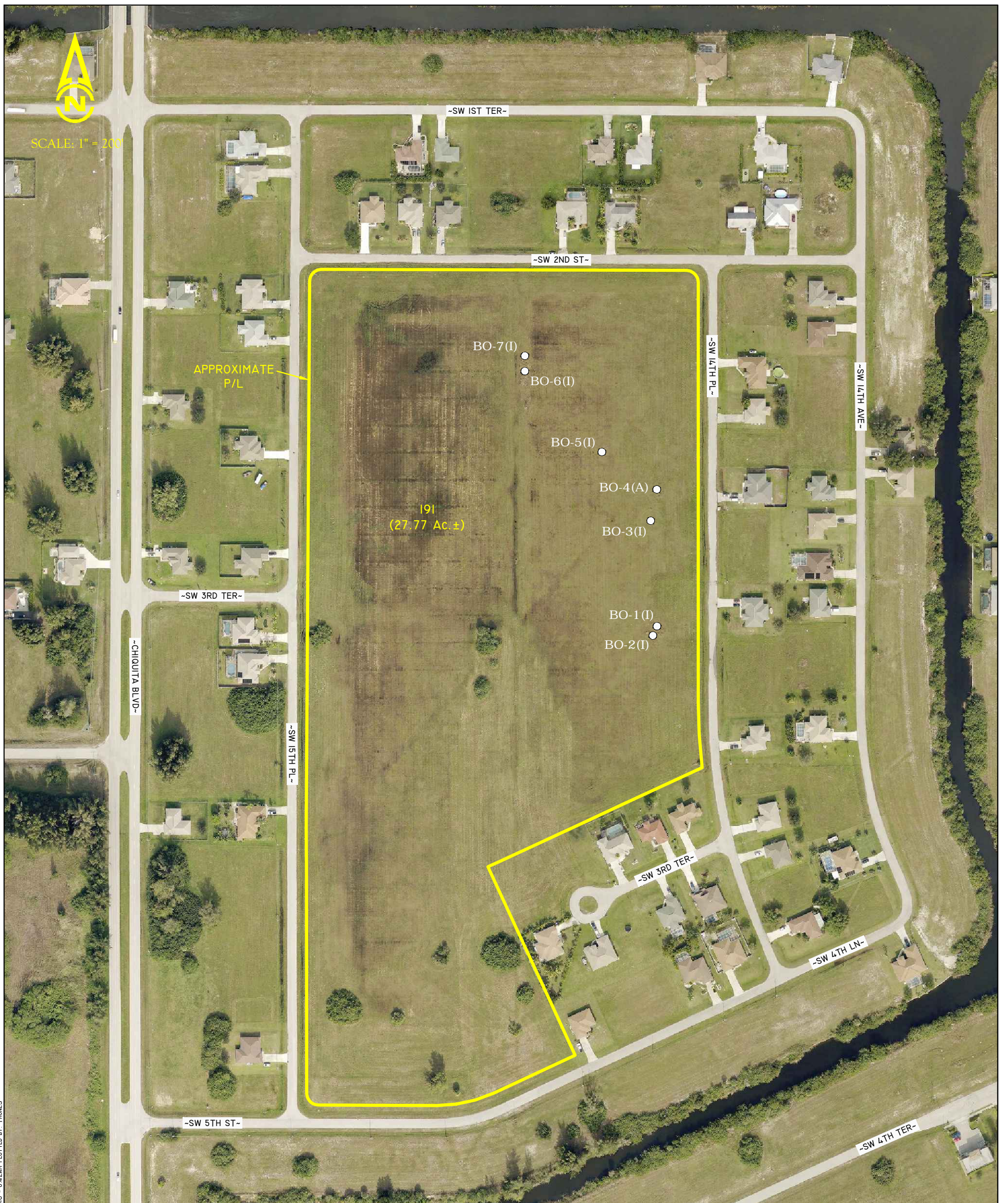
PASSARELLA & ASSOCIATES, INC.

  
Michael Myers  
Senior Vice President

MM/ra

Enclosure

<sup>1</sup>Florida Department of Transportation. 1999. Florida Land Use, Cover and Forms Classification System. Procedure No. 550-010-001-a. Third Edition.



LEGEND:

- BO-1 APPROXIMATE LOCATION OF BURROW OWLS (TYP.)
- (A) ACTIVE BURROW
- (I) INACTIVE BURROW

FLUCFCS CODES	DESCRIPTIONS	ACREAGE	% OF TOTAL
191	UNDEVELOPED LAND WITHIN URBAN AREAS	27.77 Ac.±	100.0%
<b>TOTAL</b>		<b>27.77 Ac.±</b>	<b>100.0%</b>

NOTES:

AERIAL PHOTOGRAPHS WERE ACQUIRED THROUGH THE LEE COUNTY PROPERTY APPRAISER'S OFFICE WITH A FLIGHT DATE OF JANUARY 2016.

PROPERTY BOUNDARY ESTIMATED FROM THE LEE COUNTY PROPERTY APPRAISER'S GIS WEBSITE.

FLUCFCS LINES ESTIMATED FROM 1"=200' AERIAL PHOTOGRAPHS AND LOCATIONS APPROXIMATED.

FLUCFCS PER FLORIDA LAND USE, COVER AND FORMS CLASSIFICATION SYSTEM (FLUCFCS) (FDOT 1999).

UPLAND/WETLAND LIMITS HAVE NOT BEEN REVIEWED BY ANY REGULATORY AGENCY AND ARE SUBJECT TO CHANGE.

DRAFT

DRAWN BY T.S.	DATE 11/8/16
REVIEWED BY M.M.	DATE 11/8/16
REVISED	DATE

13620 Metropolis Avenue  
Suite 200  
Fort Myers, Florida 33912  
Phone (239) 274-0067  
Fax (239) 274-0069



**CHIQUITA 27 ACRE PARCEL**  
AERIAL WITH FLUCFCS AND LISTED SPECIES  
LOCATION MAP

DRAWING No. 16FRS2549
SHEET No.